


# cordless electric!



ROHDE'S SALES & SERVICE  
JUNCTION 33-44 RT. 1  
PARDEEVILLE, WIS. 53954

GENERAL  ELECTRIC



**no gas. no oil.**  
**Just clean, economical  
electric power.**

**Six cordless electric tractor models**

From the big powerhouse E20 to the E8M grass eater, six Elec-Trak tractor models to match your lawn and budget. Each is packed with the built-in performance, safety, quietness and hardworking features only an electric tractor can provide.

**Easy on/easy off attachments**

No belts to hook up or any pulleys to align. Mowers, snow throwers, tillers, rakes simply plug into the Elec-Trak tractor for power — and lots of it. With an Elec-Trak tractor you'll easily trim tough jobs to size because attachments are independently powered by their own motors.

**Plug-in accessories**

Now with Elec-Trak tractors, no hedge is too far from an outlet. The high capacity power

pack goes to the work. With Elec-Trak you have real power and a safer 36 volt source. Trim hedges, grass, weed flower beds, cut wood all day in quiet comfort.

**Experience Elec-Trak Tractor Power Today**

Come in and drive the Elec-Trak tractor. Mow some grass. Trim a little. Get the feel of solid General Electric power. You'll quickly see that whatever your lawn size, whatever your budget, whatever the task, there's an Elec-Trak tractor just right for you.



# Yard care the ELEC-TRAK tractor way.

## QUIET

Forget noisy exhausts. The rugged electric power system won't disturb anyone. Mow in the cool early morning in comfort — your's and your neighbor's.

## SAFE

Elec-Trak tractors are safety engineered. From mower blades that stop in less than three seconds to a seat switch that cuts off tractor and attachment power the instant the operator leaves the seat.

## Top Notch Mowers

The unique floating action of Elec-Trak mowers follows the ground contour independent of the tractor. No scalping or high spots. There's a model mounting the type rotary mower you want — front or center mounted. Even gang reels. Plus, many models you get a choice of side or rear discharge.

## Home Fuel Supply

An on-board, plug-in charger makes any standard 110-volt outlet your fuel supply. No dangerous gas or messy oil to store.

## Instant start

Forget about adjusting chokes, fuel mixtures and spark plugs. Just turn the key and you're off. Every time. In any weather.

## Virtually Maintenance Free

Because the Elec-Trak tractor is electric there are fewer parts to wear or break. Fewer parts to replace or lubricate. Check the power pack water level once a month. It's that simple. And if you need service, your Elec-Trak dealer is factory trained.

## Easy to use

Easy to get on, easy to steer and maneuver. All controls are at your fingertips while you sit in a comfortable super-foam seat.

## ECONOMICAL

A power pack recharge costs only about 5¢ an acre. And with no oil or filters to replace, maintenance costs are virtually nil!

## POWERFUL

Elec-Trak tractors have the get-up-and-go you need to mow deep grass, muscle through a blizzard or till your garden. Electric motors are more efficient than gas engines. That's a fact.

## High Performance

Mow 1-1/4 acres per charge with the "suburban" E8M all the way up to 10 acres per charge with the heavy-duty E20, E15, or E12. Run portable for longer than you'd care to work a day. Clear snow for hours at a time.



# Which model has the features you're looking for?

## E20

- Heavy duty batteries.
- 8 forward speeds, 4 reverse in each of 4 gear ranges. (32 speeds fwd.)
- Foot speed control.
- Pushbutton cruise control.
- Single switch controls forward and reverse.
- Electric front lift.
- Super foam seat. Adjustable back.
- 36V electric accessory, PTO outlets, headlights and dashlights.
- Instruments show fuel use and quantity.
- Full safety interlocks protect operator.
- Mounts rear tiller.

## E12

- 3 forward speeds, 2 reverse in each of 4 gear ranges. (12 speeds fwd.)
- Electric front lift.
- Super foam seat.
- 36V electric accessory, PTO outlets, headlights and dashlights.
- Single lever speed control puts forward and reverse at your fingertips.
- Instruments show fuel use and quantity.
- Full safety interlocks protect operator.
- Hill holding startup control with power pulse button for smooth pickup.
- Optional heavy-duty power pack.
- Mounts rear tiller.

## E10M

- Standard "big tractor" 36-volt Elec-Trak power pack (six 6-volt Elec-Trak batteries).
- 3 torque ranges forward, 1 reverse.
- Simple, feather-touch clutch control and brake on one pedal.
- Fuel gauge.
- Built-in GE Elec-Trak tractor safety interlocks.
- Large disk brake.
- Fast acting lever lift for attachments.
- Optional heavy-duty power pack.
- Super foam seat.
- 36-volt outlet for accessories.

## E15

- 7 forward speeds, 3 reverse in each of 4 gear ranges. (28 speeds fwd.)
- Electric front lift.
- Super foam seat.
- 36V electric accessory, PTO outlets, headlights and dashlights.
- Single lever speed control puts forward and reverse at your fingertips.
- Instruments show fuel use and quantity.
- Full safety interlocks protect operator.
- Optional heavy-duty power pack.
- Mounts rear tiller.

## E12M

- 3 forward speeds, 2 reverse in each of 3 gear ranges. (9 speeds fwd.)
- Mid-mounted mower for tight turning.
- Super foam seat.
- 36V electric accessory, PTO outlets, headlights and dashlights.
- Quick acting manual lift. Mounts Elec-Trak front implements.
- Single lever speed control puts forward and reverse at your fingertips.
- Instruments show fuel use and quantity.
- Hill holding startup control with power pulse button for smooth pickup.
- Optional heavy-duty power pack.

## E8M

- Built-in GE Elec-Trak tractor safety interlocks.
- 3 torque ranges forward, 1 reverse.
- Mounts a big 36" beltless mower.
- Tightest turning.
- High-torque D.C. drive motor.
- Large rear storage area/weight box.
- Simple, feather-touch clutch control and brake in one pedal.
- Large disk brake.
- One piece welded-unitized body frame.
- Fast acting lever lift for attachments.



## Available only with Elec-Trak tractors



### Flip-up Front Mower

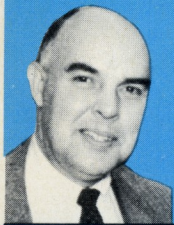
- Easy cleaning. Just lift mower and clean off clippings.
- Simple blade sharpening. Touch up blades right on the mower... even sharpen in the field with grinder that plugs into Elec-Trak tractor for power.
- 20-second mower removal. No pulling or lifting.
- Available on E20, E15, and E12 Elec-Trak tractors.



### Portable Arc Welder

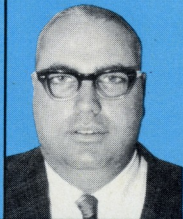
- High capacity DC welding from your Elec-Trak tractor.
- Portable... lets you bring the welder to the job.
- Easy to use.
- Great for home and farm use.
- 50 to 180 ampere range.

# "The General Electric Elec-Trak tractor is fantastic!" and everywhere Elec-Trak tractor owners are saying:



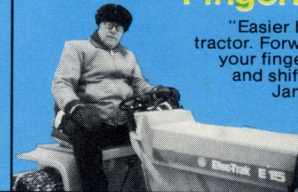
## "Minimum maintenance"

"It has all the advantages of anything electrical. No noise, spark-plugs, coils, condensers, oil, gasoline or tune-ups. This means minimum maintenance and big dollar savings." Robert S. Brown, Paris, Maine



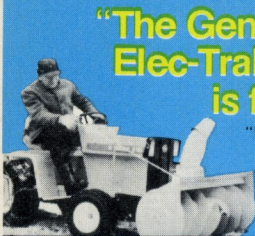
## "Most advanced tractor on the market"

"The GE Elec-Trak tractor is the most advanced and superior tractor available on the market today. We are delighted we own a quiet, safe and economical tractor. Not like loud and noisy gasoline-powered tractors." Gary W. McClary, Pataskala, Ohio



## "Fingertip control"

"Easier handling with the Elec-Trak tractor. Forward and back with a flick of your finger. No fooling with clutch and shifting as with other tractors." James W. Irwin, Northfield, Ohio



## "The General Electric Elec-Trak tractor is fantastic!"

"No gasoline-powered tractor can compete with it in performance or cost savings." Ralph P. Adelman, Mars, Penn.



## "Super power"

"This tractor's loaded with power. I've cut down a lot of plenty high grass with it. And Elec-Trak tractor does it much quicker." Donald D. Davies, La Fayette, N.Y.



## "It's quiet"

"Not noisy like my old gasoline tractor. This tractor's quietness allows me to mow my lawn at night without bothering anyone." Anthony J. Leone, Jr., M.D., Pittsford, N.Y.



## "Economical"

"My Elec-Trak tractor doesn't cost much to charge up. In fact, I don't really notice any difference in my electric bill since I've been using it." Alfred W. Haisch, Washington, Ill.



## "Snowthrower outworks them all"

"The Elec-Trak snowthrower really does the job. For its size, it will outwork any tractor I've ever seen. And I got a load of snow around here." Robert C. Chamberlin, Altamont, N.Y.



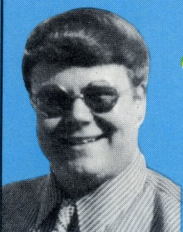
## "Solves winter plowing problems"

"You just can't beat the Elec-Trak tractor for what it can do in snow. This winter I had no problems cleaning up my road and backyard areas. It's the best machine I ever bought." Ellsworth E. Rounds, Sowaen, Mich.



## "Doesn't scalp lawn"

"It doesn't scalp the lawn like the other garden tractors we owned. The mower floats beautifully. And because it's on the front, you get in closer, especially around bushes." Mr. & Mrs. Murray Day, Tecumseh, Mich.



## "Excellent traction"

"I just like its great traction. The Elec-Trak tractor doesn't slip in mud and can muscle its way thru rough terrain." M. Dean Peters, Oxford, Ohio



## "No pollution"

"No polluting smelly fumes from my electric tractor. This tractor's the best thing to happen to me in 20 years." Norman T. Kull, Fairview Village, Pa.



## "No engine vibration"

"There's no engine vibration with the Elec-Trak tractor. Just smooth and quiet. Not like my gasoline Tractor." Lyndon Herrstrom, Galva, Ill.



## "Reliable"

"I'm a widow and the Elec-Trak tractor is convenient. I needed something that I wouldn't have to depend on from someone else." Mrs. Kathryn Butler, Schenectady, N.Y.



## "Handy tractor plug-in power tools"

"The tractor outlet to plug-in electric hand tools is great. I'm cutting hedge a lot quicker than before." Robert M. Murray, Auburn, N.Y.

ROHDE'S SALES & SERVICE  
JUNCTION 33-44 RT. 1  
PARDEVILLE, WIS. 53954

# Elec-Trak<sup>®</sup>

## Tractor Versatility

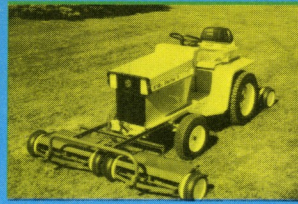
- Wide range of heavy-duty attachments install in minutes, remove in seconds.
- Portable electric hand tools simply plug into the Elec-Trak tractor for power . . . let you work where the work is.

GENERAL ELECTRIC COMPANY  
OUTDOOR POWER EQUIPMENT OPERATION  
BLDG. 702, CORPORATIONS PARK  
SCHENECTADY, NEW YORK 12345

GENERAL  ELECTRIC

### WARRANTY SUMMARY (for residential use)

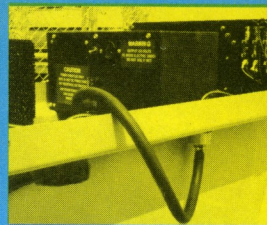
In addition to a one year warranty against defects on all tractor parts, the Elec-Trak tractor features a five-year battery warranty (three years E8M). The battery is warranted against defects for the first two years, with a pro rata charge during the last three years on models E20, E15, E12, E12M, E10M. The E8M battery is warranted against defects for the first year, with a pro rata charge during the next two years. See applicable Owner's Use and Care Manual for complete warranty statement.



Super wide **gang mower** cuts big jobs to size



Double rider capacity with **double seat**. Double your pleasure by adding **golf bag holder, canopy top**.



**Inverter** changes tractor power standard 110-volt AC



Your Best Buy for small lawns and trimming—110-volt **power mower** with cord



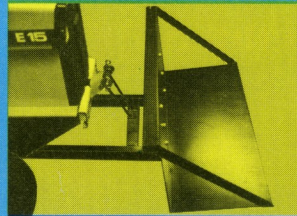
20-bushel **vacuum and cart** cleans lawn and driveway



**Radio bracket**—enjoy good listening with quiet Elec-Trak tractor operation



Tough **sleeve hitch** takes ground-busting implements

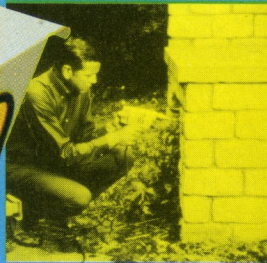


Your tractor lifts and lugs with carry-all **platform lift**

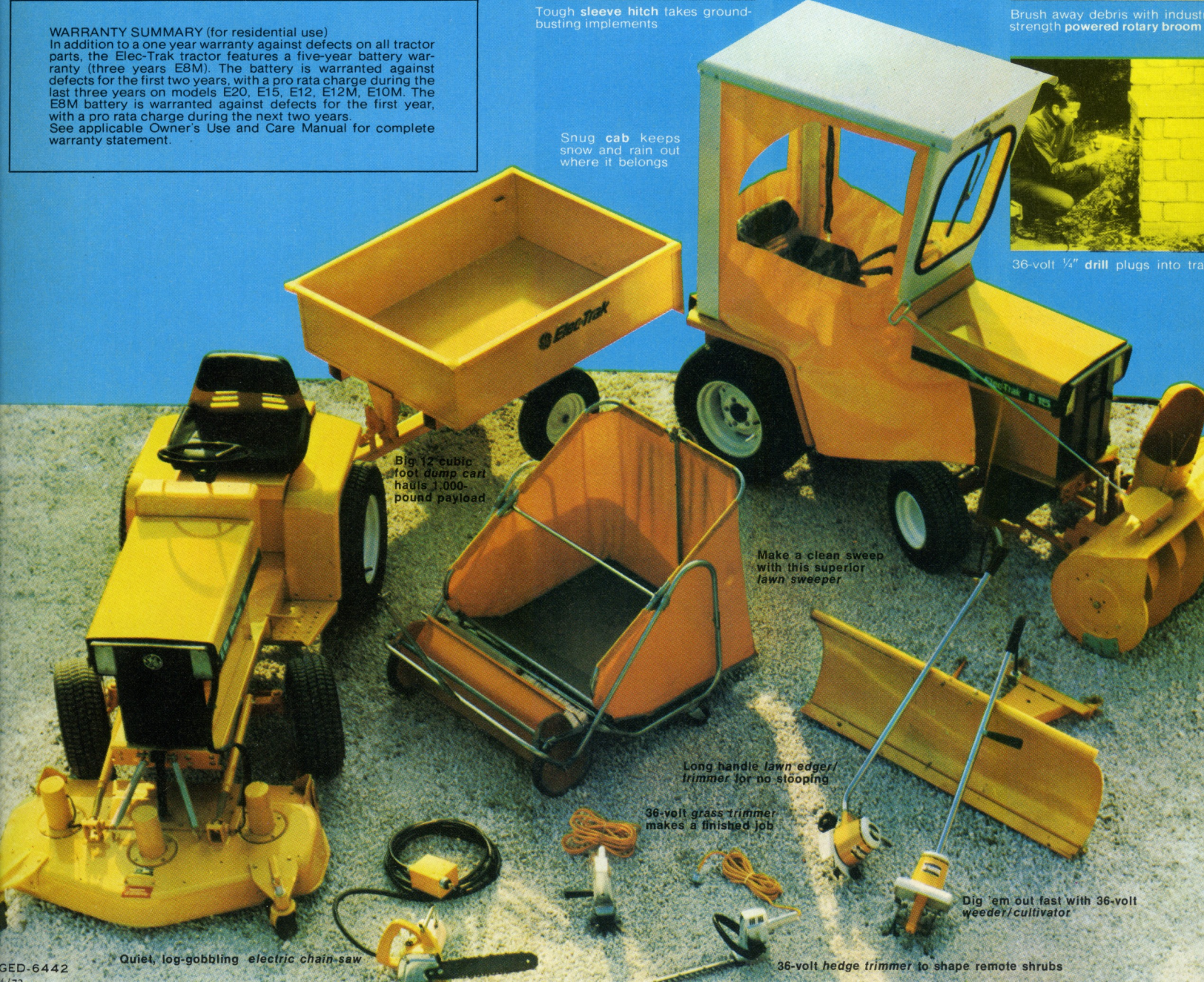


Brush away debris with industrial strength **powered rotary broom**

Snug **cab** keeps snow and rain out where it belongs



36-volt  $\frac{1}{4}$ " **drill** plugs into tractor



Big 12 cubic foot **dump cart** hauls 1,000-pound payload

Make a clean sweep with this superior **lawn sweeper**

Long handle **lawn edger/trimmer** for no stooping

36-volt **grass trimmer** makes a finished job

Dig 'em out fast with 36-volt **weeder/cultivator**

36-volt **hedge trimmer** to shape remote shrubs

Quiet, log-gobbling **electric chain saw**